

# For Mobility at Griffith Park, L.A. is Looking Up.

City of Los Angeles Department of Recreation and Parks is conducting a feasibility study of an Aerial Transit System (ATS) for Griffith Park. The study will analyze the feasibility of an ATS in alleviating congestion and improving access to all of Griffith Park. This study will allow for thorough and informed decision-making on whether to move forward with an ATS for Griffith Park. The study will analyze eight categories, ranging from financial feasibility to safety.

## Getting Around Griffith Park Today

---

At 4,200 acres, nestled just above Hollywood and Downtown L.A., Griffith Park's popularity continues to grow as one of L.A.'s most desirable destinations. However, with 10 million visitors annually, traffic, overcrowding, road safety and fire hazards are commonplace and pervasive. This trend is expected to continue, impacting visitors and residents alike.

## What is an Aerial Transit System?

---

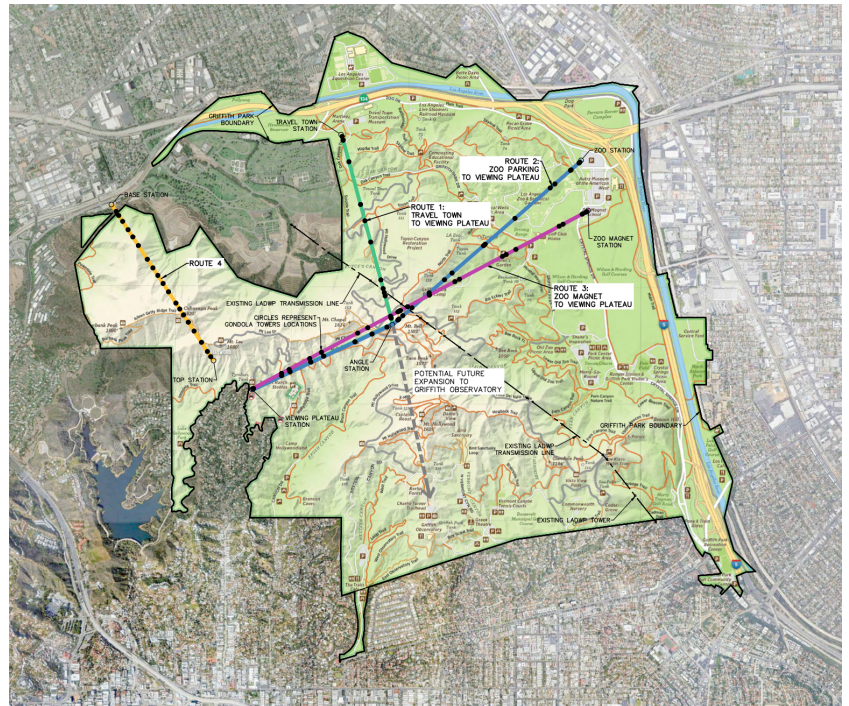
Propelled by a series of towers and stations, an ATS uses motorless, electric and cable-driven carriers to transport people in the air. Learn more about this sustainable transit technology by visiting our website.

## Potential Routes Examined

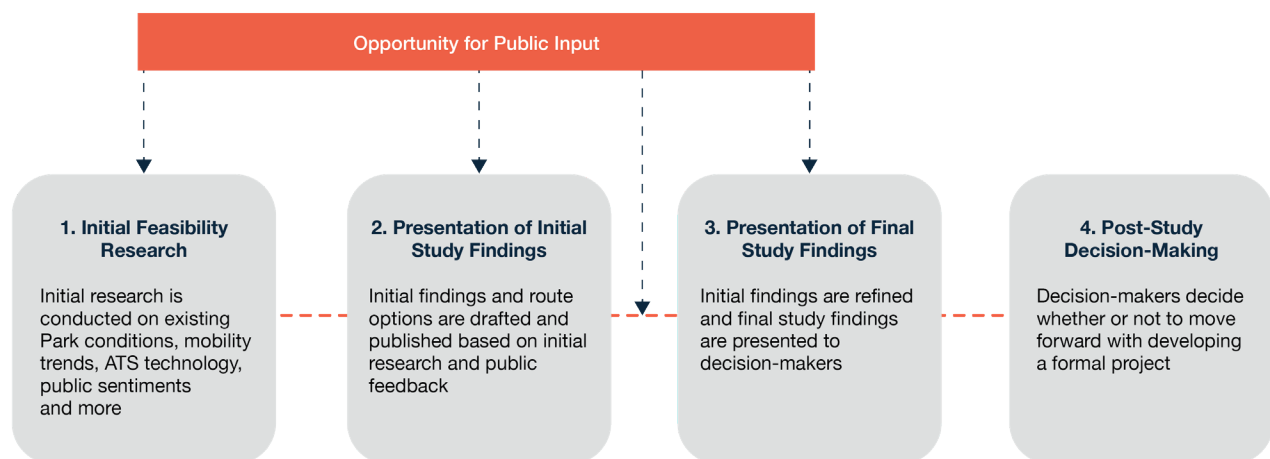
Currently, four routes are being studied to determine where an ATS in Griffith Park could be located –

- **Route 1: Travel Town**
- **Route 2: L.A. Zoo Parking**
- **Route 3: L.A. Zoo Magnet**
- **Route 4: Warner Brothers**

Each route stems from thorough research on existing Park conditions and feedback from community stakeholders. See the map and visit our website to learn more about the studied routes.



## Process



## Get Involved

Public participation is a vital component of this study. Visit our website to take the survey, learn more about opportunities to attend upcoming informational events and stay updated on the latest study information.